



Bopup Instant Messaging (IM) Architecture Overview Datasheet

Bopup Instant Messaging (IM) Architecture Overview

KEY BENEFITS

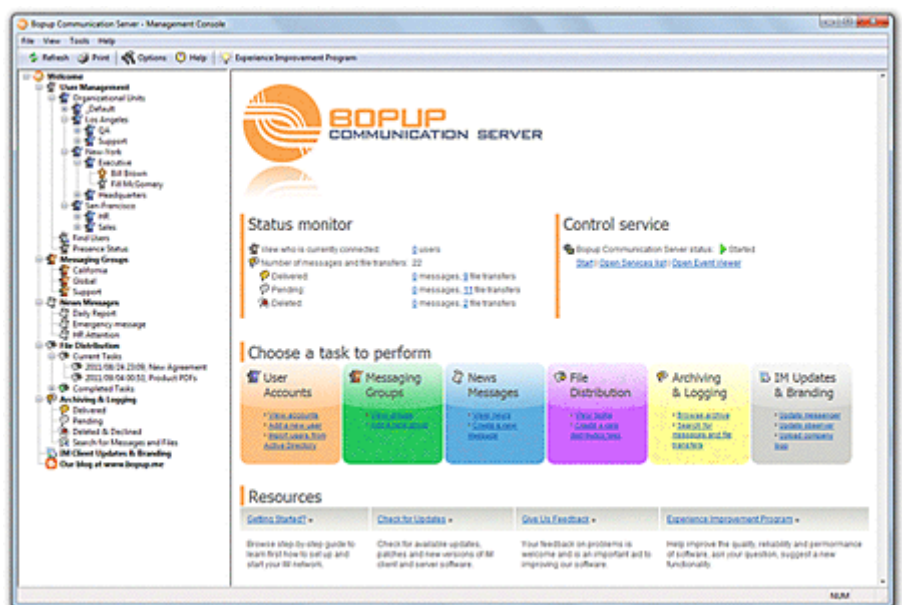
- Creates a secure and private Instant Messaging (IM) workspace with or no Internet access
- Active Directory (LDAP) integration that allows to import employees "on-the-fly", or by any criteria like AD Groups/Organizational Units
- Enables offline messaging with ability to access the IM workspace outside a business LAN/WAN
- Builds a corporate structure such as departments/branches tree with restrictions to see and communicate with each others
- Offers a centralized management of user accounts and messaging groups
- Built-in server-side News Messaging System notifies and informs users on scheduled time
- File Transfer offers sending files and folders safely to multiple recipients at the same time
- Easy, simple setup and deploying the client-side software. Installation takes just a few minutes
- Handles IM clients options, allows to distribute the settings from Administrative Console
- File Distribution System to perform fast and secure distribution files and documents to users from the server

What IM solutions your company is looking for?

Bopup IM Suite is a secure real-time communication software designed to provide efficient and private Instant Messaging (IM) over networks of any size. This software is based on a client/server architecture that meets most of the critical business needs, such as centralized management, the Active Directory (LDAP) support, message and file transfer logging. It can be easily deployed over the business infrastructure to unite the entire company's offices and other locations into one internal IM workspace with control over messaging groups, user permissions to view others, send messages and documents, message and transfer archives with printing support.

Since the server stores and delivers offline messages and files, employees never lose information they are supposed to receive. Messaging is encrypted with strong algorithms so personal and group conversations are safe and secure even if a data are sent via the Internet. Users can send messages with formatted text, links and graphic emoticons (smileys), organize their personal Contact Lists, access their contacts from any workplace and see who is online and available for communication. The client software can be configured on the server to run in the Confirmation Mode, which means that the client pops up every time a new message is received and keeps the window on top until the user confirms the message.

To crown it all, the server-side product, Bopup Communication Server is fast to deploy and easy to use. It has a great and flexible user interface and comes with a built-in messaging system for scheduled and planned user notifications including the File Distribution system that offers a managed distribution documents to users. Client instant messengers can be easily installed and distributed via Active Directory Group Policies with the support of pre-installed settings.



Management Console (Bopup Communication Server)

FEATURES

Secure and Private Communication

Safe and secure communication is the primary and most important key for organizing an effective instant messaging (IM) workspace within a corporate and business network. Be sure that messaging is encrypted and not accessible by anyone even if users chat via an Internet connection. All transmitted messages and documents are encrypted with strong encryption algorithms (Diffie-Hellmann key exchange/CAST-128).

Authentication Modes

Support of various modes to authenticate and authorize connected users. Choose the best way for your corporate and business infrastructure from the available authentication modes: Simple, Windows Authentication (SSPI) and Private login/password.

Offline File Transfer and Urgent Messaging

Rest assured that no information will be lost and all messages and documents will be properly delivered to their recipients even they are currently unavailable. The IM server enables offline delivery of personal, group, news messages and file transfers and it automatically sends the stored data to recipients when they go online. Set a period to store each type of messages on the server. Send urgent messages for high-priority tasks and notifications.

Terminal Server support

The client software fully supports the Terminal Server, Citrix environments and the Windows XP Fast User Switching feature. Users can communicate even if they are connected to the same server via Terminal Client sessions or have open logon sessions on the same computer simultaneously. This is an important aid to companies that widely use the terminal server environment and want to provide full IM services to connected users.

Centralized Notification

Send notifications and urgent messages and keep users updated on any events and information. These messages are automatically delivered by the server at the scheduled time at the specified intervals.

Confirmation Mode

Activate the Confirmation Mode that pops up the client messenger when a message is received and keeps it on top of other windows until the user clicks the Confirm Message button. That is the best way to attract users' attention.

Access from a Command Line interface

Control the communication server and send messages directly from a command line interface. Send scheduled and instant messages to users and groups from third-party applications, scripts or batch files.

Messaging Groups

Organize and arrange users into messaging groups, assign and manage permissions to send group messages and files for each user within a group. It is a simple way to keep users informed and notify them within the same office or department with a single mouse click.

User Presence Status

Online statuses allow users to see the current status of each user in their Contact List, i.e. Online, Away, Offline/Not available and control their own status.

Contact List access

Cutting edge technology allows users to organize personal Contact Lists and access them from any workplace and location. Users are informed if there are new contacts available on the IM server and if they can be added to their Contact Lists.

Easy IM client updates & Branding

Easily and instantly update the client-side software from the IM server. This flexible solution is designed to keep the client versions up-to-date without manually handling software installations on users' computers. The MSI technology offers fast and on-the-fly upgrades for the existing versions of the messengers on client computers. Branding lets you get instant messengers customized with your company logo.

Active Directory (LDAP) support

Import user accounts from a global catalog and create the local users database on the server within a few seconds. Import accounts by choosing different criterias: by Organizational Units (OU) or by Groups. The server also provides integration options with a directory and can search and import accounts "on-the-fly" when new users connect.

File Distribution

Fast, managed and secure distributing files and directories to client workstations. Important documents can be assigned and delivered to users from the server in a fully automated mode with a set of advanced flags.

Message and Transfer Logging & Archiving

Browse, search and view the entire message and file transfer archives. Print information for any period and for any person.

Fast to Deploy and Easy to Use

Neither experience nor special skills are needed for installing the server. Just go through the steps of the Setup Wizard and get your IM system running in a few minutes.

Portable Instant Messaging clients

Instant messengers, both Bopup Messenger and Bopup Observer are portable software. Copy the messenger to another folder on a hard drive, shared network location, flash drive or move the client-side software to another computer/workstation and get it working with no any setup and configuration.

IM SOFTWARE PRODUCTS

Free 30-day Trial

The software is available with a free 30-day trial period. During this period both the server and client-side applications work without any restrictions and limitations except a number of concurrent connections that can be established with the communication server from client computers. That number of connections is limited by 25 concurrent users.

Cost per Concurrent Connection, Not per Installation

Our licensing policy is based on a number of concurrent connections to the IM server, not on a number of users, employees, computers, or installations of the client software.

Volume Discount Prices

Volume discount prices for the client products are available that depend on the number of licenses ordered. And for high number the price for each copy of the messenger software as low as \$3.40 US.



Bopup Communication Server

A server-side software that organizes, manages and controls all of private IM system

Server OS Requirements

- Microsoft Windows NT 4.0/2000/XP/2003/Vista/2008/7

Hardware Requirements

- 1 GHz processor or higher recommended
- 1 GB RAM
- 70 MB free disk space
- Active Directory (LDAP) catalog (optional)
- MS SQL Server 2000 or higher (can be installed with the server's installation package)
- Network connection configured for TCP/IP protocols
- Internet connection (optional)



Bopup Messenger

A client-side messenger sends and receives both personal, group messages and files safely

Client OS Requirements

- Microsoft Windows 98/Me/NT 4.0/2000/XP/2003/Vista/2008/7

Hardware Requirements

- 200 MHz processor or higher recommended
- 128 MB RAM
- 3 MB free disk space
- Network connection configured for TCP/IP protocols
- Internet connection (optional)

Client messenger applications can be deployed via Active Directory Group Policies, MSI setup packages are provided. Installations can be distributed with the *setup.ini* configuration file that may include pre-installed settings. For more information, please proceed to www.bopup.com/downloads/



Bopup Observer

An one-way IM application just receives data, designed for alerting, urgent, emergency needs

About B Labs

Starting from 2000, B Labs deals with the development of software systems in the sphere of instant messaging and real-time communication. The aim of the company is to present efficient and innovative software solutions for the organization in terms of safe exchange of messages, data and documents transmitting between the users in local networks of small offices, companies of small and medium business as well as in large corporate and enterprise networks. Company success and more than 10-year-experience in this sphere is proved by the list of clients, which covers the companies from 35 countries of the world.

For more information please visit our website at www.bopup.com



B Labs, PO Box 3, Konakovo-1, Konakovo, Russia, 171251
General: info@bopup.com
Sales: sales@bopup.com
Phone (US Toll Free): +1-877-99-BOPUP (+1-877-992-6787)
www.bopup.com, www.bopup.de, www.bopup.es, www.bopup.nl,
www.bopup.ru

Copyright © 2000–2011 B Labs. All rights reserved. Other products or company names are or may be trademarks or registered trademarks and are the property of their respective holders.